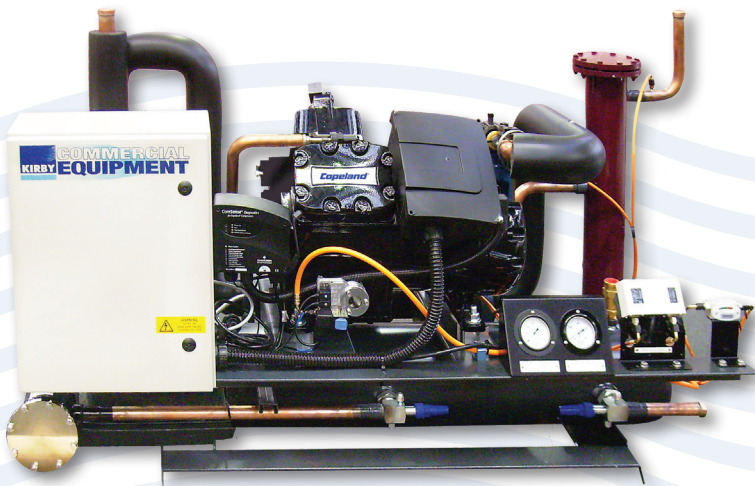




## KIRBY® SEMI HERMETIC 4 & 6 Cylinder Basic Units

More Powerful Range  
– With Copeland®  
Stream Piston  
Compressor Technology



Exclusively distributed by

**KIRBY**  
A BEIJER REF Company

# SEMI HERMETIC 4 & 6 CYLINDER BASIC UNITS

## With Copeland® Stream Piston Compressor Technology

Built smart, compact and tough the new generation Kirby® Semi Hermetic 4 & 6 Cylinder Basic Unit range demonstrates leading performance, superior efficiency, durability along with advanced compressor protection features and a much quieter operation. Ideally suited for medium to large food services, industrial process chilling or human comfort installations.

With ultimate reliability, ease of installation and ease of maintenance the Kirby® Semi Hermetic 4 & 6 Cylinder Basic Unit design is tailored for the most difficult projects and is easily connected to a Kirby® optimised remote condenser.

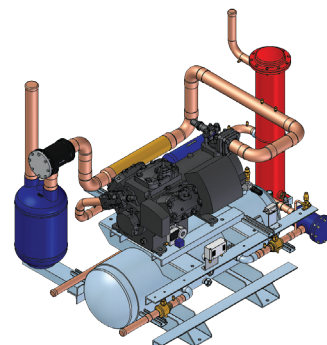
REFRIGERANT	APPLICATION	STREAM COMPRESSOR - BASIC UNIT NOMINAL CAPACITY ENVELOPE							
		EVAPORATING TEMPERATURE °C							
		-25	-20	-15	-10	-5	0	5	10
R134a	MED TEMP				19KW <-----> 107KW				
R404A/R507/R448A	LOW TEMP / MED TEMP	15KW <-----> 161KW							
R407C	MED TEMP				31KW <-----> 152KW				
R407F	LOW TEMP / MED TEMP	31KW <-----> 152KW							

### Standard Configuration Features

- Copeland® Stream semi hermetic compressors
- Intelligent CoreSense™ diagnostic and communication compressor module
- Oil safety switch
- Motor protection and discharge temperature safety
- Crankcase heater
- Inactive capacity control head - 50% (4 cylinder) and 33/67% (6 cylinder)
- Suitable for R134a, R404A, R507, R448A, R407F, R407C applications
- Compact and reduced operational weight
- High flow liquid receivers
- One piece copper tube design
- TraxOil control and coalescing oil separator
- Dual auto HP/LP safety control with flexible hoses
- Liquid line drier and moisture Indicator

### Optional Ancillary Kit Configurations

- Liquid line solenoid valve
- Head cooling fan assembly
- Suction accumulator
- Fully wired IP44 PWS Electrical Control Panel
- Single bank capacity control valve and coil
- Dixell XC645D controller
- Gauge panel including oil, discharge and suction
- Water cooled condenser
- Compressor sound shell



Copeland® is a Registered Trade Mark  
and CoreSense™ is a Trade Mark of  
Emerson Climate Technologies

**13 23 50**  
**kirbyhvacr.com.au**

Exclusively distributed by

**KIRBY**  
A BEIJER REF Company

The contents of this brochure are copyright protected and may not be reproduced in any form without the written consent of Kirby HVAC&R Pty Ltd (T/A Kirby). Recommendations and advice regarding the use of the products described in this publication are to be taken as a guide only and are given without liability on the part of the company or its employees. As Kirby continually improves its product range and processes, Kirby reserves the right to change product specifications without any prior notification. Please refer to the kirbyhvacr.com.au website for the latest version of this publication. The purchaser should independently determine the suitability of the product for the intended use and application and that the product complies with relevant standards. Kirby accepts no responsibility for loss or damage (direct or indirect and including consequential loss, loss of profits or opportunity and economic loss) however arising which results from any errors or omissions in the information contained in this publication or arising from the use or application of the information contained herein.

Kirby HVAC&R Pty Ltd continually strives to improve products and processes. We reserve the right to modify product features without notice. Information is correct at time of printing.

© Copyright 2020 Kirby HVAC&R Pty Ltd  
Information is correct at time of printing.